

The ALX 92x Series

Integrated 1:1 print & apply system



Unbeatable speed and performance

High performance 1:1 print & apply system for a wide range of industrial applications

Batch numbers, bar codes, date of manufacture, product descriptions; as the demands on product information are getting still more complex and demanding, so is the need for fast and reliable print & apply systems that are able to do the job.

Working in 1:1 mode, the label printing and dispensing procedures take place simultaneously and is immediately followed by the application of the label to the product.

The fastest possible

The 64 bit CPU builds images extremely fast, enabling printing of variable information in real 1:1 applications.

The multi-tasking operating system builds the next print job while the current label is being printed. The ALX 92x series can even keep up its operation while changing between print jobs.

Impressive print speeds of up to 400 mm/sec and a print head resolution of 12 dots/mm provide an extremely high throughput with excellent print quality even for the smallest fonts and graphics.

A selection of models depending on the application

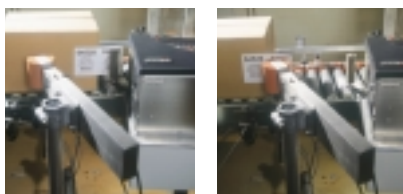
In addition to left and right hand versions the ALX 92x series is available in multiple print widths: 106 mm, 127 mm, 160 mm.

Reliable industrial design

Due to the user-friendly design, the ALX series is very easy to operate. It is a robust and reliable system which is able to meet even the most demanding industrial applications. It is available in both left and right-hand versions and is easily integrated into any production line.

Large capacity label and foil supply

To increase run time, the ALX 92x series handles big rolls, 300 mm diameter label and 1000 m long foil. To decrease reload time, the ALX 92x series optimizes roll changes for the operator.



Characteristic features



Versatile Display

The operator display supports multiple languages. This makes it ideal for multi-national operations. The display can be rotated in order to adjust it to the angle of the machine in the production line. So the messages are easily readable for the operator.



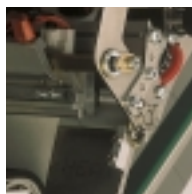
Quick Change Print Head

The operator can exchange the print head easily – without tools. The pre-adjusted print head guarantees excellent print quality.



Fonts & Bar Codes – all inclusive

19 fonts and all common bar codes are standard features of the ALX 92x series. The compact flash card can store additional fonts or logos.



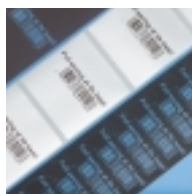
Adjustable sensor for material flexibility

The web sensor position can be adjusted at the front of the ALX 92x series, even when the machine is running. The dial adjustment includes a scale that indicates the sensor location. This allows the operator to accurately position the sensor half way across the web to match the label's pattern.



Bar code readability helped by dot check

The powerful dot check feature checks all elements in the print head to maintain print quality and bar code readability. If there is a problem, the operator gets a warning.

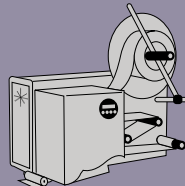


Foil saving minimizes foil cost

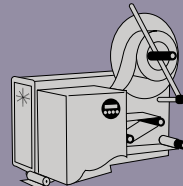
The ALX 92x series has the industry's leading foil saving device, leading to significant savings in foil. Print save can be activated by a gap in the print as small as 6 mm in length, depending on print speed.

Specifications

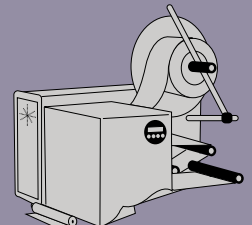
Print technology	Thermal transfer or direct thermal
Print head	Near Edge technology with of 12 dots/mm resolution
Label length	Approx 1000 mm
Print speed	100 to 400 mm/sec; adjustable in steps of 5 mm/sec
Foil-saving	Effective foil-saving starting from 6 mm non-print area
Resident fonts	17 standard fonts and 2 scalable fonts; scalable fonts can be rotated in 1° increments
1D bar codes	All common 1D bar codes
2D bar codes	PDF 417, MaxiCode, Data Matrix, Codablock F
Memory card	1 slot for 32 MB Compact Flash Card
Display	2 lines by 16 character back-lit LCD, multilingual. Display can be rotated by 360°
Interface	RS232/422/485, max Baud rate 115.2 KB. Centronics parallel
Dispensing edge	Adjustable angle for direct or indirect dispense mode
Label web tension control	User-friendly adjustable friction mechanism provides web tension
Label drive	Controlled forward and backward movement of label material for real 1:1 applications and full area printing of labels
Web sensor position	Calibrated dial adjustment, more than half way across the web
Roll size	300 mm outer diameter, core diameter min 38 mm (optional 76 mm and 102 mm)
Media specifications	Thermal transfer or direct thermal compatible media up to 240 g/m ²
Foil reserve	Roll with max. 1000 m length
CPU	Integrated 64 bit CPU
Control functions	
USI I/O board	5 V or 24 V DC interface (error, warning, ribbon out, media out, end print, ribbon low, external signals transport roller open, data ready, start print, reprint, feed, pause)
Electrical supply	
Power consumption	Auto-sensing power supply, range 80 to 270 V, 50/60 Hz, single phase 500 VA (operating consumption dependant on application)
Options	
Horizontal position	Lead screw adjustment for fine setting of the mechanical position. Accessible from front adjustment of the unit
Real-time clock	For printing actual time, production date, best before dates



Models
ALX924
Print width 106 mm
Label width 16-130 mm
Dimensions (WxHxD) 612x565x381 mm
Weight 35 kg



ALX925
Print width 127 mm
Label width 16-130 mm
Dimensions (WxHxD) 612x565x381 mm
Weight 35 kg



ALX926
Print width 160 mm
Label width 16-184 mm
Dimensions (WxHxD) 612x565x435 mm
Weight 38 kg

